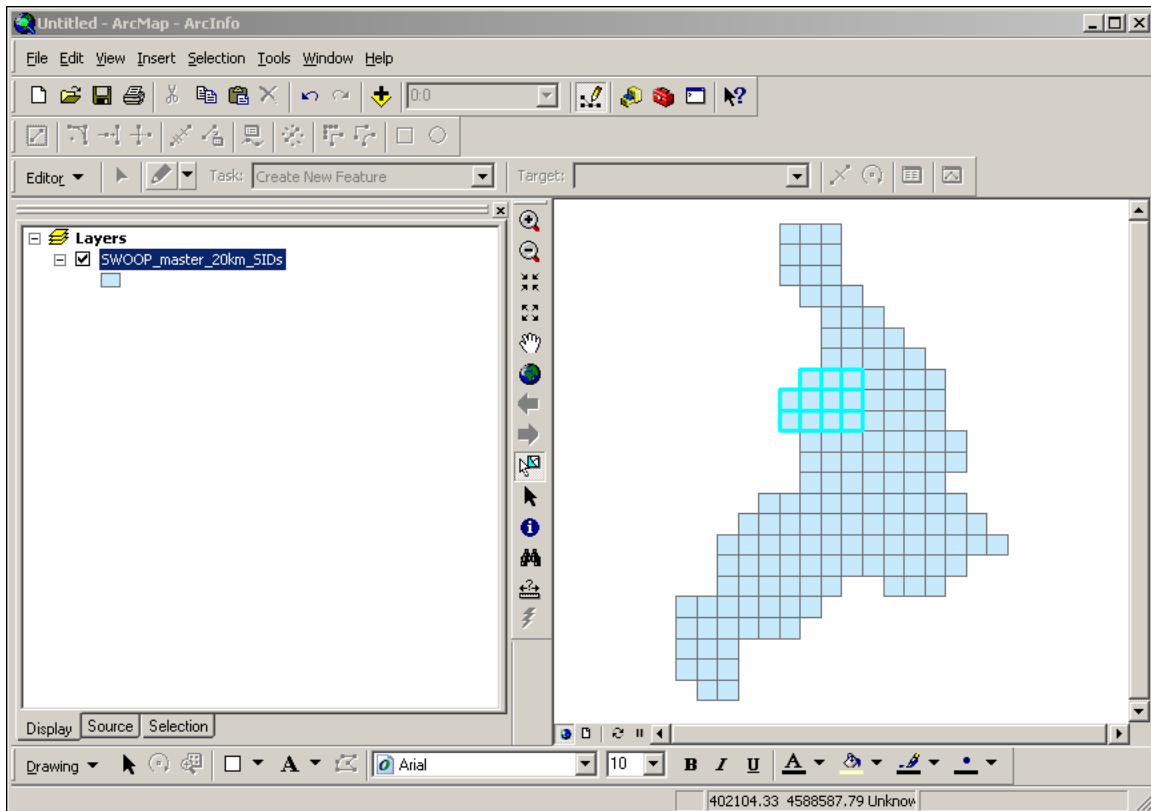


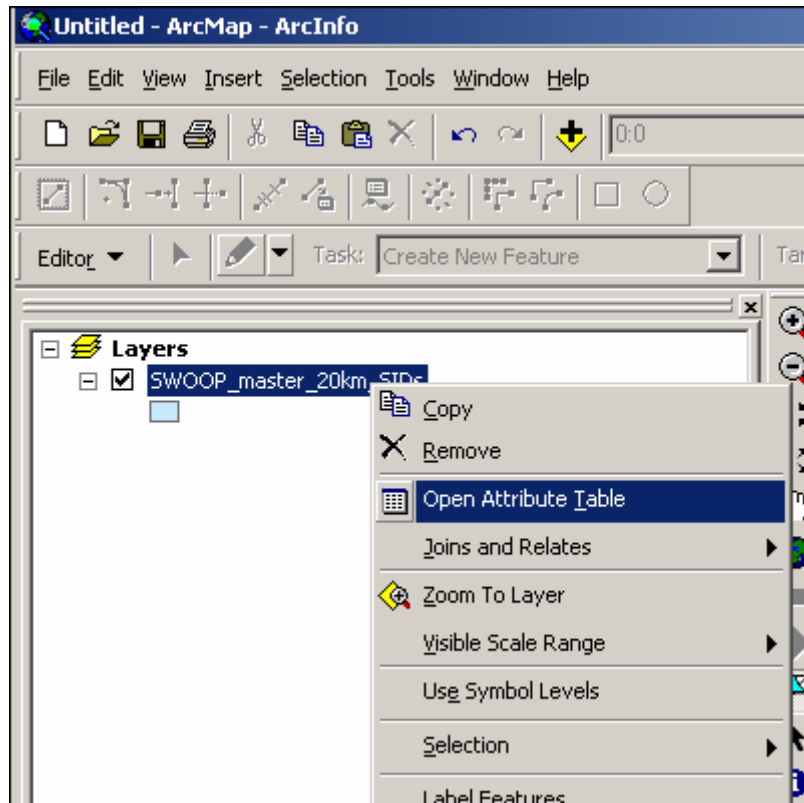
# Generating Image request list from Index

When generating lists of Ortho Images please adhere to the format described below. This will ensure the quickest possible turnaround times in the delivery of data.

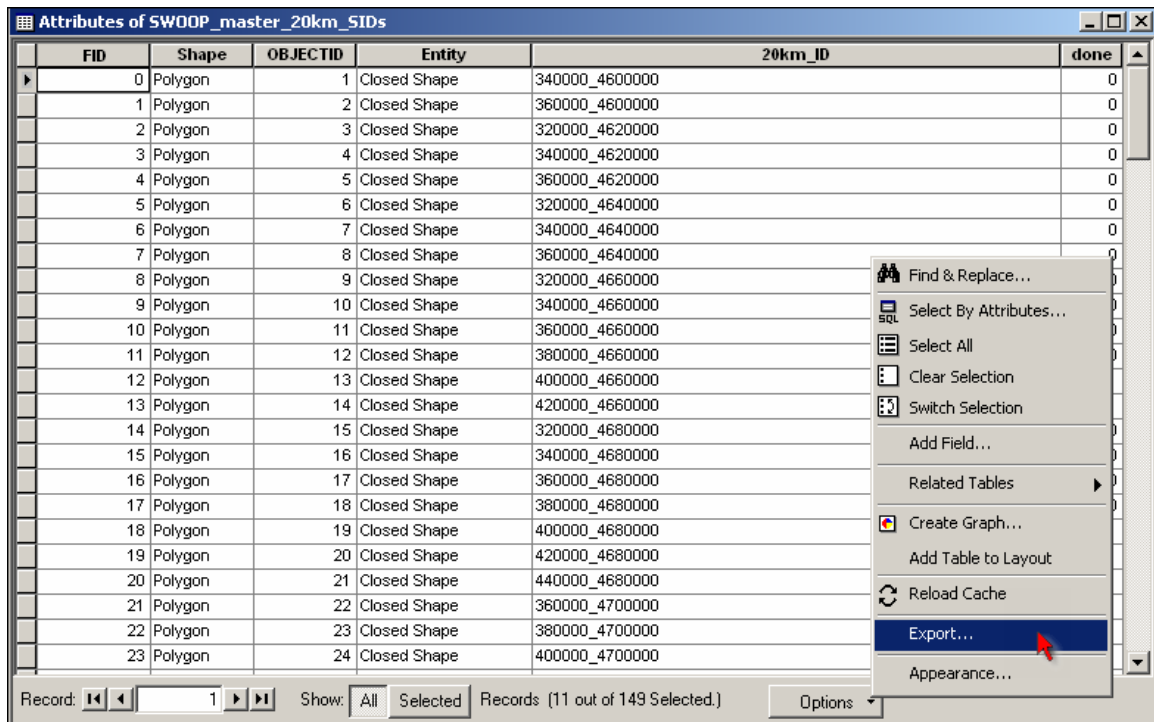
- 1. Spatially select the tiles that you wish from the Index file. You can perform spatial queries to select all the tiles within your particular region.**



- 2. Once you have the correct tiles selected, Right click on the Index Layer in the Table of contents. Click "Open Attribute Table"**



3. Click on the Options button at the bottom right and click export



4. The Export data window will open. Ensure that you are exporting the *Selected* records. Use the file folder button to change the path of the file location if necessary.

