



Land Information Ontario

Warehouse Data Class Description
Report:

Built up Area

Format:
Standard NRVIS Interchange Format (SNIF)

Issued: July 4, 2008

Table of Contents

Introduction..... 3

Using this Report..... 4

Related Documents 5

Data Class Overview 6

File List..... 7

Product Data Model..... 8

Data Class Table Descriptions..... 9

Appendix..... 11

Introduction

Disclaimer

This technical documentation has been prepared by the Ministry of Natural Resources (the “Ministry”), representing Her Majesty the Queen in right of Ontario. No warranties or representations, express or implied, statutory or otherwise shall apply or are being made by the Ministry with respect to the documentation, its accuracy or its completeness.

In no event will the Ministry be liable or responsible for any lost profits, loss of revenue or earnings, claims by third parties or for any economic, indirect, special, incidental, consequential or exemplary damage resulting from any errors, inaccuracies or omissions in this documentation; and in no event will the Ministry’s liability for any such errors, inaccuracies or omissions on any particular claim, proceeding or action, exceed the actual consideration paid by the claimant involved to the Ministry for the materials to which this instructional documentation relates. Save and except for the liability expressly provided for above, the Ministry shall have no obligation, duty or liability whatsoever in contract, tort or otherwise, including any liability or negligence. The limitations, exclusions and disclaimers expressed above shall apply irrespective of the nature of any cause of action, demand or action, including but not limited to breach of contract, negligence, strict liability, tort or any other legal theory, and shall survive any fundamental breach or breaches.

Additional Information

For more information about this document, please contact Land Information Ontario at (705) 755-1878 or lio@ontario.ca

Published July 2008
© 2008 Queen's Printer for Ontario

Using this Report

This report describes the contents and structure of the selected data class package in the format (SNIF) in which data classes are extracted from and published to the Ontario Land Information Warehouse. The purpose of this report is to assist data users in understanding the data received in the SNIF package, as well as to assist data publishers in creating a SNIF package for a single data class.

For a general overview of the SNIF package, refer to the document entitled [What is SNIF?](#) The document entitled *Land Information Ontario Detailed SNIF Subscription Specifications* provides a detailed examination of the SNIF.

This report is meant to be used in conjunction with the [Warehouse Data Class Description Report for Common Tables](#). These two reports together fully describe the complete contents of a SNIF package.

Data Class Overview

The Data Class Overview section provides an overall description of the data class, including version. The abstract class refers to the spatial characteristics to which this class conforms.

File List

The File List section lists the mandatory and optional data class tables that are contained within a SNIF package. Tables that are listed as optional may not necessarily be included in a SNIF package. This report only lists the tables that are contained within the SNIF package “spatial” folder. The tables in the “common” folder relate to every data class and are described in a separate *Warehouse Data Class Description Report for Common Tables*.

Product Data Model

The relevant tables for the data class are depicted in diagram form, showing the relationships between the tables. Common tables are not included in the diagram. Their relationships to the geographic unit (GEOG_UNIT) table are depicted in diagram form in the *Warehouse Data Class Description Report for Common Tables*.

Data Class Table Descriptions

This section of the report describes each table associated with the data class. A description of the table is included, along with column names, descriptions, types, and sizes. Columns which are considered mandatory are noted. The abbreviated column names that appear in the shape file itself are also shown.

Valid values are listed for any columns which have a predefined list of possible values. If there are more than six possible values, the first six are shown in the report with the column description. The complete list is shown in the report appendix.

Using this Report - continued

Some data classes are distributed with an enhanced shape file that contains all attributes from tables that are related to the geographic unit table in a one-to-one relationship. These columns are described in the “_DBF_VW” table in this section of the report. Each column description includes the source data class table in which the column exists. For example, the source for the DBF column “NAME” would be noted as AIRPORT_AIRSTRIP.OFFICIAL_NAME. This means that the NAME column is the OFFICIAL_NAME column located in the AIRPORT_AIRSTRIP table.

Appendix

The report appendix includes full listings of permissible values for columns with more than six possible values. Also included is a description of date fields that are included in every table.

Related Documents

[What is SNIF?](#)

[Warehouse Data Class Description Report for Common Tables](#)

[Ministry of Natural Resources Policy for Management of Classified Data in Ontario
Land Information Warehouse](#)

[Land Information Ontario Detailed SNIF Subscription Specifications](#)

[Land Information Ontario Detail SNIF Publication Specifications](#)

Data Class Overview

Data Class: Built-Up Area
Short Name: BLTUPARE
Version: 3

An extent which delineates a Built-Up Area (alias Urban Area) which is the class of all constructed areas in the province of Ontario. All areas have a Built-Up Area Community Class classification and a Community Series classification. This class will be used to populate the constructed area of the Ecological Land Classification (ELC) community.

Abstract Class: SPMNTPOLY

Abstract Spatial Multi-Non-Tessellating-Polygon User Object. One or more polygons form a single object. Polygons may NOT overlap. However, holes gaps and islands are allowed. An example of this might be parks if we allow for parks with multiple disjoint pieces (Thousand Islands Park), or if we model a municipal or other jurisdiction as only containing the land (but not major water bodies) within its boundaries then the City of Toronto with the Toronto Islands would fall into this class as would any townships or districts that contained island with major bodies of water (Mantoulin).

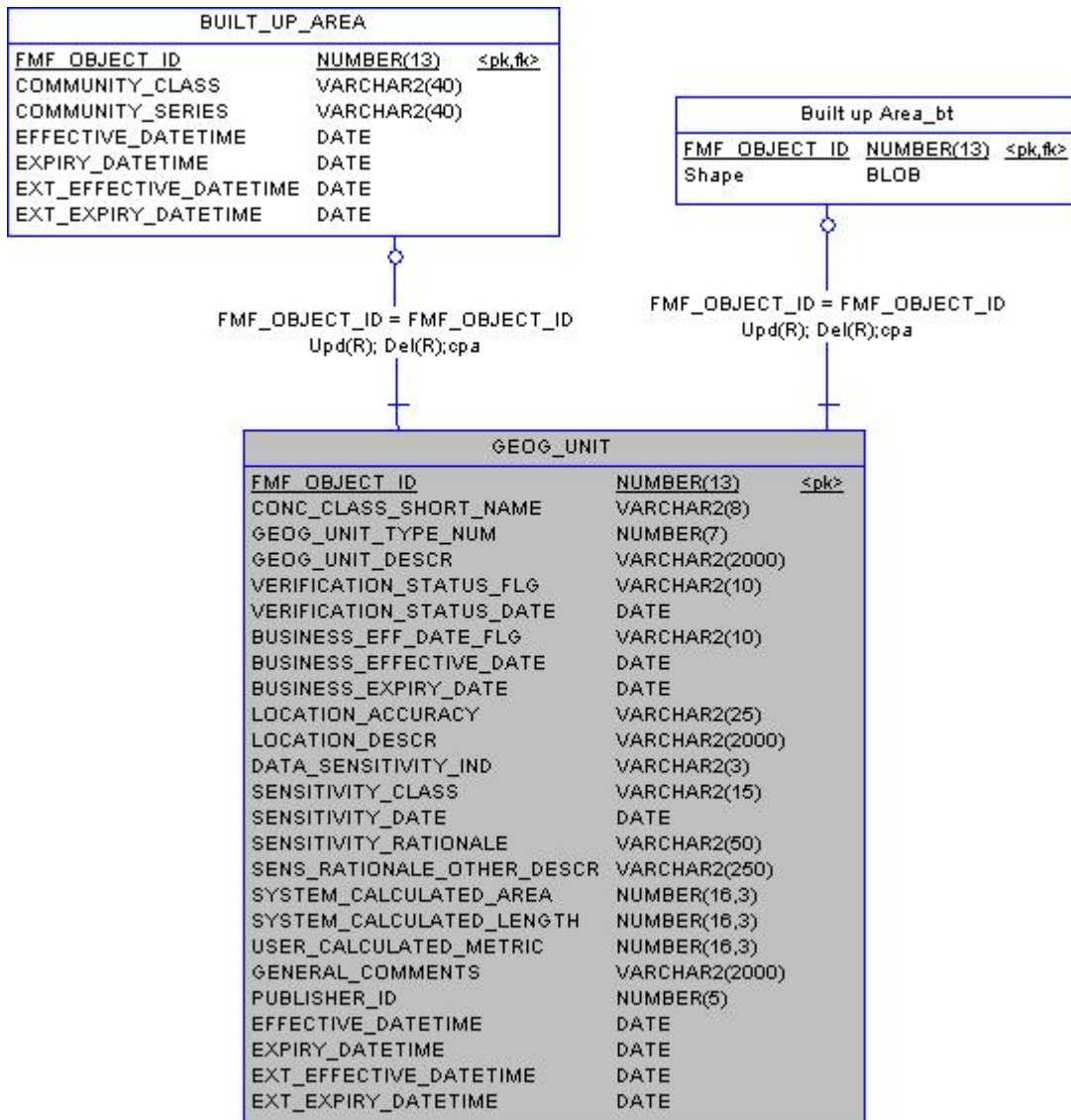
File List

The following list specifies the table files, along with their folder locations and type (mandatory, optional, or lookup), that are included in a SNIF package for this data class, as extracted from the Ontario Land Information Warehouse.

For data publishers, the table files that are not identified as mandatory may be included if the appropriate data is available. Likewise, additional common tables (as described in the *Warehouse Data Class Description Report for Common Tables*) are also identified as optional and may be included if the appropriate data is available. Table files identified as lookup tables provide descriptive values for codes within other tables. These tables do not need to be supplied by data publishers.

Folder and File Name	Mandatory/Lookup
common\EXTERNAL_REF_TYPE.tbl	(lookup)
common\GEOG_UNIT_AND_JUSTIF.tbl	No
common\GEOG_UNIT_AND_SOURCE.tbl	Yes
common\GEOG_UNIT_AND_SUPP_MATERIAL.tbl	No
common\GEOG_UNIT_DATABASE_REFERENCE.tbl	No
common\GEOG_UNIT_OTHER_INFORMATION.tbl	No
common\GEOG_UNIT_PARTY.tbl	No
common\JUSTIFICATION.tbl	No
common\LOCATION_ACCURACY_LIST.tbl	(lookup)
common\ROLE_TYPE_LIST.tbl	(lookup)
common\SOURCE.tbl	(lookup)
common\SUPPORTING_MATERIAL.tbl	No
spatial\BLTUPARE\BUILT_UP_AREA.tbl	Yes
spatial\BLTUPARE\GEOG_UNIT.tbl	Yes
spatial\BLTUPARE\poly (shapefile)	No

Product Data Model



Data Class Table Descriptions

Table BUILT_UP_AREA				
Desc:	An extent which delineates an Ecological Land Classification (ELC) community, which may be a more broad class or a more detailed series. Just as a set of Community Series logically nest within a Community Class, contiguous areas of such a set would spatially dissolve into a single Community Class area.			
ID	Column Name	Type	Mandatory	Short Name
1	FMF_OBJECT_ID Unique system generated identifier.	NUMBER(13,0)	Yes	OBJECT_ID
2	COMMUNITY_CLASS Standard name for an ecological community class. Valid Values: Constructed	VARCHAR2(40)	Yes	COM_CLASS
3	COMMUNITY_SERIES The standard name assigned to an ecological community series. Valid Values: Built-up Area Impervious,Built-up Area Pervious	VARCHAR2(40)	Yes	COM_SERIES

Table GEOG_UNIT				
ID	Column Name	Type	Mandatory	Short Name
Desc: Note: The full GEOG_UNIT table is not included here. For the full description, please see the Warehouse Data Class Description Report for Common Tables.				
1	FMF_OBJECT_ID	NUMBER(13,0)	Yes	OBJECT_ID
	System-generated object identifier, unique at the application level.			
3	GEOG_UNIT_TYPE_NUM	NUMBER(7,0)	Yes	GUT_NUMBER
	Identifier of the Geographic Unit Type.			
	Valid Values:			
	21	Built-Up Area		

Appendix

Lookup Tables

These tables are lookup tables containing codes and associated descriptive values.

Table Name: N/A

Appendix (continued)

Date Information

Note that the format for date attribute columns is yyyy-mm-dd-hh:mm:ss. An example is 1998-02-16-00:00:00.

Standard date columns are shown on the data model diagram, but to save space are not repeated for each of the detailed table descriptions. The descriptions below apply to all of them.

Column Name	Type	Man	Short Name
EFFECTIVE_DATETIME	DATE	Yes	EFF_DATE
For subscription: Date/time that the record was created in the LIO database. For publication: Date/time that the record was created in the source database.			
EXPIRY_DATETIME	DATE	No	EXP_DATE
For subscription: Date/time the record is no longer valid in the LIO database. For publication: Date/time the record is no longer valid in the source database.			
EXT_EFFECTIVE_DATETIME	DATE	Yes	EXT_EFF_DT
For subscription: Date/time that the record was created in the source database. For publication: not applicable.			
EXT_EXPIRY_DATETIME	DATE	No	EXT_EXP_DT
For subscription: Date/time the record is no longer valid in the source database. For publication: not applicable.			

All tables contain EFFECTIVE_DATETIME and EXPIRY_DATETIME.
All tables except lookup tables also contain EXT_EFFECTIVE_DATETIME and EXT_EXPIRY_DATETIME.